

# COUNTY EXECUTIVE - 1230

## MISSION

The mission of the County Executive is to ensure the efficient operation and delivery of high-quality services to Albany County residents.

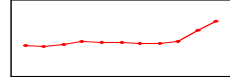
## ABOUT OUR DEPARTMENT

The County Executive is the chief executive officer of County government, elected by the voters of Albany County to a four-year term of office. Responsibilities of the Office include directing, coordinating and monitoring the activities of all County administrative units under the County Executive's control; appointing administrative heads of departments; approving and executing contracts and agreements for the County as authorized; directing the creation of the Tentative Annual Budget; maintaining communications with federal, state and local governments; and directing special projects requiring coordination among County departments.

## OUTCOMES

- Albany County will maintain an open, efficient and cost-effective government.
- Albany County residents will receive high-quality public services delivered in the most effective manner possible.
- Residents of Albany County will enjoy a safe community that promotes and protects the health and well-being of its youth and those in need.
- Albany County will take advantage of the economic growth resulting from various Tech Valley initiatives, providing quality job opportunities for a diverse cross-section of the County's residents.

## APPROPRIATION HISTORY



1998:	\$635,739
1999:	\$612,479
2000:	\$673,982
2001:	\$768,997
2002:	\$759,970
2003:	\$730,427
2004:	\$716,523
2005:	\$707,534
2006:	\$792,332
2007:	\$1,143,368
2008:	\$1,452,335

## CONTACT INFORMATION

Office of the  
County Executive  
County of Albany  
112 State Street, Suite 200  
Albany, New York 12207  
Office: (518) 447-7040  
Fax: (518) 447-5589

## 2008 ACCOMPLISHMENTS

### Housing

The County Executive committed \$325,000 to fund the second year of the Albany County Housing Trust Fund across the County. Awards have been made to improve 39 units of affordable housing in coordination with over \$2.8 million from other sources. The Executive also successfully coordinated the application to NYS for a \$25,000 workforce housing study grant and a \$750,000 workforce housing grant to rehabilitate 25 housing units in eligible communities. In total, 64 families will be provided safe and affordable housing due to this year's efforts.

### Energy, Conservation

The County Executive assisted with the development of major energy conservation and carbon-reduction projects at the Sewer District, Department of Public Works and Department of General Services. The Executive was successful in concluding negotiations with the Canadian Pacific Railroad for the acquisition of the nine-mile Voorheesville-to-Albany Rail Trail to be used as a recreational trail.

### Long Term Care Initiative

The County Executive has committed to improving long term care services in Albany County through the creation of a Long Term Care Council, added resources to eliminate the waiting list for the Expanded In-home Services for the Elderly Program, and funded a long term care crisis management program.

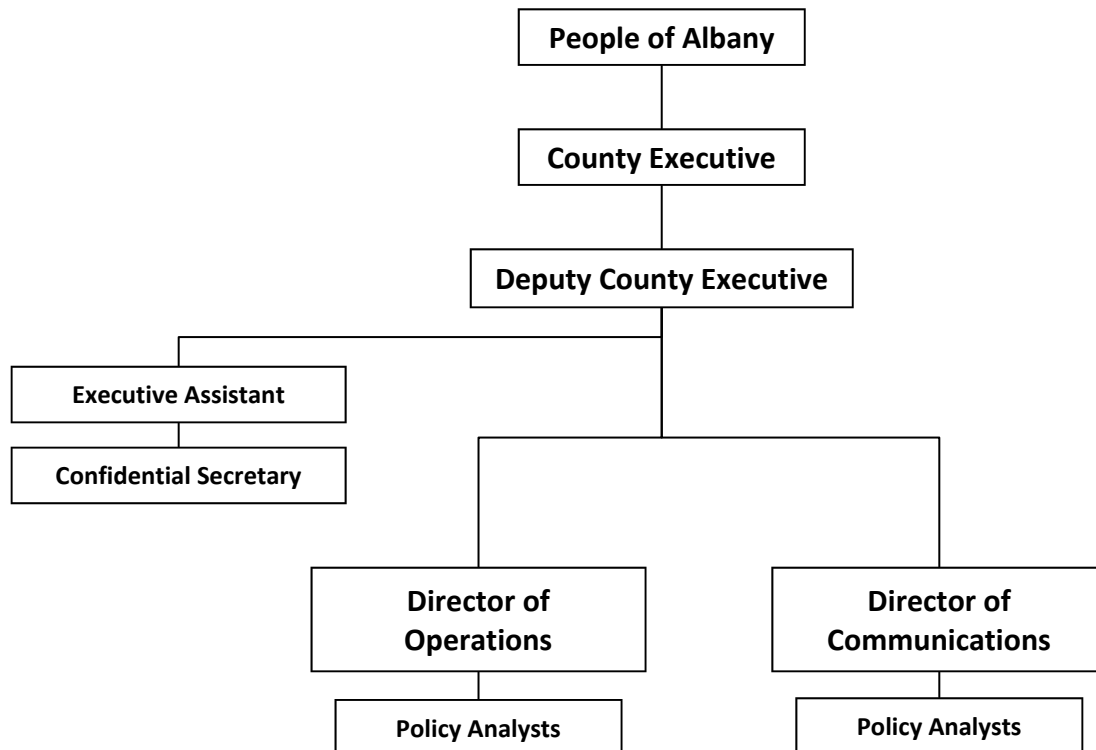
### Public Safety

The County succeeded in receiving a \$150,325 grant from the NYS Division of Criminal Justice Services to strengthen our re-entry system in an effort to reduce re-offending behaviors by individuals returning to our community after incarceration.

# COUNTY EXECUTIVE - 1230

## STRATEGIC INITIATIVES 2009

- The 2009 Executive Budget includes continued funding for the Housing Trust Fund. The Trust Fund, which was created in 2007 with proceeds from the sale of foreclosed properties, supports the development and preservation of affordable housing.
- Funding for an independent whistleblower hotline is included, which can be made available to all jurisdictions in the County.
- Albany County will apply for several Local Government Efficiency Grants from the Department of State. Areas under consideration for study include public safety, economic development and environmental protection issues.
- A new senior economic development position is included in this proposal. A high-profile, full time position will be needed to manage the County's role in an increasingly active and diverse economic development environment.
- Albany County has aggressively pursued energy management and energy conservation and has undertaken major energy efficiency initiatives at many County buildings and the Sewer District. In 2009, Albany County will take the next step by defining the entire energy and carbon emissions footprint of County government and devising a long term strategy to gradually reduce consumption and costs.
- A Commuter Choices program will be launched to offer County employees more environmentally friendly and cheaper ways to travel to work.



# COUNTY EXECUTIVE - 1230

Account	Description	2007 Expended	2008 Adjusted	2009 Proposed	2008-09 Change	2008-09 Percent Change
<b>Appropriations</b>						
<b>County Exective-(1230)</b>						
	Personnel Services	\$ 565,597	\$ 596,754	\$ 599,290	\$ 2,536	0.4%
	Equipment	\$ 0	\$ 2,000	\$ 2,000	\$ 0	0.0%
	Contractual Expenses	\$ 71,543	\$ 703,587	\$ 376,358	\$(327,229)	(46.5%)
	Fringe Benefits	\$ 142,444	\$ 149,994	\$ 165,389	\$ 15,395	10.3%
	County Exective	\$ 779,583	\$ 1,452,335	\$ 1,143,037	\$(309,298)	(21.3%)
	<b>Appropriations</b>	\$ 779,583	\$ 1,452,335	\$ 1,143,037	\$(309,298)	(21.3%)
	<b>County Share</b>	\$ 779,583	\$ 1,452,335	\$ 1,143,037	\$(309,298)	(21.3%)
			<b>2008</b>	<b>2009</b>	<b>2009</b>	<b>2008-09</b>
			<b>Adjusted</b>	<b>Requested</b>	<b>Proposed</b>	<b>Changes</b>
	COUNTY EXECUTIVE		9	9	9	0
						<b>Percent Change</b>
						0.0%